



Nilfisk cfm

Powerful vacuums. Proven solutions.



Instructions/Spare Parts Manual

Nilfisk Model GWD255 Drum Top Vacuum

CAUTION: This Nilfisk vacuum cleaner is not to be used in explosion-hazardous areas, as serious injury could result.

Under no circumstances may this vacuum cleaner be used safely for the collection of hazardous or toxic materials unless equipped with a HEPA filter. Be sure to install the HEPA filter according to Nilfisk's written instructions.

Do not use this cleaner for the removal of hazardous substances unless you are licensed and/or certified for this work by the all authorities having jurisdiction.

EMPTYING: If this vacuum cleaner is used to collect hazardous material, do not attempt to open or empty its contents without personal protective clothing and respiratory protection. This procedure must be completed in a contained environment. Contact with the cleaner, filters and all other accessories used when picking-up hazardous materials must be handled according to federal (EPA, OSHA), state and local regulations valid for the vacuumed substance.

ATTENTION EMPLOYER: Please ensure these instructions for Use are made available and understood by your employees or any other persons who may use this equipment.

To list all toxic and hazardous materials would be beyond the scope of these instructions. It is the Employer's responsibility to identify, for Employee's and others' information, hazardous or toxic materials which may be collected by this equipment. Such information must be communicated to your Employees and other potential users of this equipment.

Nilfisk-Advance America Inc.
300 Technology Drive
Malvern, PA 19355
Tel: 1.610.647.6420
Fax: 1.610.647.6427
www.pa.nilfisk-advance.com
e-mail: email@nilfisk-advance.com

SAFETY INSTRUCTIONS

THIS VACUUM CLEANER IS DESIGNED FOR COMMERCIAL USE.
ACCIDENTS DUE TO MISUSE CAN ONLY BE PREVENTED BY THOSE USING THE MACHINE.
READ AND FOLLOW ALL SAFETY INSTRUCTIONS.



WARNING!

To reduce the risk of fire, electric shock, or injury, please read and follow all safety instructions and caution markings before use. This vacuum cleaner is designed to be safe when used for cleaning functions as specified. Should damage occur to electrical or mechanical parts, the cleaner and / or accessory should be repaired by a competent service station or the manufacturer before use in order to avoid further damage to the machine or physical injury to the user.

- Do not use outdoors.
- Do not leave the machine when it is plugged in. Unplug from the socket when not in use and before maintenance
- Do not use with damaged cord or plug. To unplug grasp the plug, not the cord. Do not handle plug or cleaner with wet hands. Turn off all controls before unplugging.
- Do not pull or carry by cord, use cord as a handle, close a door on cord, or pull cord around sharp edges or corners. Do not run cleaner over cord. Keep cord away from heated surfaces.
- Keep hair, loose clothing, fingers and all parts of the body away from openings and moving parts. Do not put any objects into openings or use with opening blocked. Keep openings free of dust, lint, hair, and anything else that could reduce the flow of air.
- **Caution:** Do not use this appliance for vacuuming dust which may be considered hazardous to health without HEPA-filter mounted.
- Do not use to pick up flammable or combustible liquids such as gasoline, or use in areas where they may be present.
- Do not pick up anything that is burning or smoking, such as cigarettes, matches or hot ashes.
- The appliance is not intended for use by young children or infirm persons. Young children should be supervised to ensure that they do not play with the appliance.
- Use extra care when cleaning on stairs.
- Do not use unless filters are fitted.
- If the cleaner is not working properly or has been dropped, damaged, left outdoors, or dropped into water, return it to a service center or dealer.
- Use only as described in this manual and only with the manufacturer's recommended attachments.
- This appliance is provided with double insulation. Use only identical replacement parts. See instructions for servicing.

GENERAL INFORMATION

BEFORE YOU PLUG IN YOUR CLEANER, check the rating plate located on the cleaners back side to see if the rated voltage agrees within 10% of the voltage available.

DO NOT OIL, the motor in your new cleaner is permanently lubricated and sealed. Do not oil the motor at any time.

During shipping, the dust bag may have become dislodged. Check the bag to insure proper seating before attempting to use the cleaner. Do not operate the cleaner without the filters installed as damage may result to the motor.

The machine is equipped with a thermal breaker to protect the motor and other vital machine parts from overheating. Should this breaker open, you will have to wait at least 5-10 minutes before you try to start it again. While you are waiting, switch the machine off and unplug it, then check the hose, dust bag and filters to be sure that nothing is blocking the flow of air through the machine.

Note! It is necessary to reset the machine by pressing the on/off button, the machine will not start again until this is done.

For longer service life and safe use of your vacuum cleaner, we recommend the following guidelines: Your cleaner is designed to pick up dirt and dust particles and water (model Eliminator I needs to use the Nilfisk Float Chamber kit in order to pick-up water). Avoid picking up hard or sharp objects with your cleaner to avoid bag breakage, clogging or possible motor damage.

SERVICE INFORMATION

To obtain consistent performance over the life of your vacuum, read through these instructions and keep them handy for future reference. If you require service, contact the dealer from whom the vacuum was purchased, or the local authorized Service Station. Always refer to your Service Station for complete service information. For prompt and complete service information, always refer to the model, type and serial number indicated on the rating plate.

IMPORTANT!

The machine is equipped with a specially designed cord which if damaged, must be replaced by a cord of the same type. This is available at authorised service centres and dealers and must be installed by trained personnel.

NOTE!

Remove the plug from the socket before performing maintenance. Before using the machine make sure that the frequency and voltage shown on the rating plate corresponds with the supply voltage.

Specifications and details are subject to change without prior notice. The accessories shown in the pictures may vary from model to model.

GROUNDING / DOUBLE INSULATION INSTRUCTIONS

GROUNDING INSTRUCTIONS (USA, Canada)

Applicable to machines with a three-pin plug

This appliance must be grounded. If it should malfunction or breakdown, grounding provides a path of least resistance for electric current to reduce the risk of electric shock. This appliance is equipped with a cord having an equipment-grounding conductor and grounding plug. The plug must be plugged into an appropriate outlet that is properly installed and grounded in accordance with all local codes and ordinances.



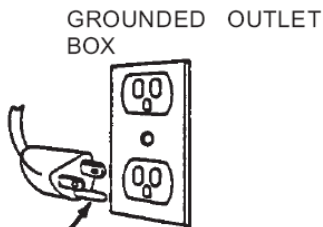
DANGER!

Improper connection of an equipment-grounding conductor can result in risk of electric shock. Check with qualified electrician or service person if you are in doubt as to whether the outlet is properly grounded. Do not modify the plug provided with the appliance. If it will not fit the outlet, have proper outlet installed by a qualified technician.

This appliance is for use on a nominal 120 volt circuit and has a grounding plug that looks like the plug illustrated in Figure A. A temporary adaptor which looks like the adaptor illustrated in Figure B may be used to connect this plug to a two-pole receptacle, as shown, if a properly grounded outlet is not available. The temporary adaptor should be used only until a properly grounded outlet, Figure A, can be installed by a qualified electrician. The green colored rigid ear, lug, or the like extending from the adaptor must be connected to a permanent ground such as a properly grounded outlet box cover. Whenever the adaptor is used, it must be held in place by a metal screw.

NOTE! This temporary adaptor is not permitted in Canada

FIGURE A



GROUNDING BLADE IS LONGEST OF THE THREE BLADES

SERVICING OF DOUBLE-INSULATED APPLIANCES

Applicable to machines with a two-pin plug

In a double-insulated appliance, two systems of insulation are provided instead of grounding. No grounding means is provided on a double-insulated appliance, nor should a means for grounding be added to the appliance. Servicing a double-insulated appliance requires extreme care and knowledge of the system, and should be done only by qualified service personnel. Replacement parts for a double-insulated appliance must be identical to the parts they replace. A double insulated appliance is marked with the words

**"DOUBLE INSULATION" or
"DOUBLE INSULATED."**

The symbol (square within a square) may also be used on the product.



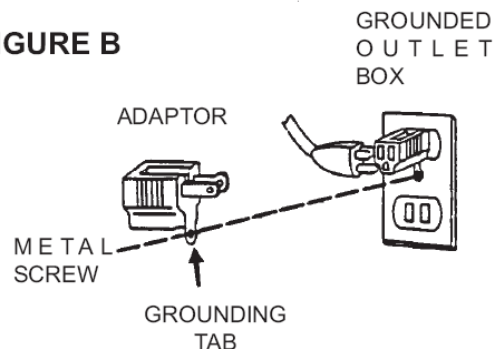
SERVICE INFORMATION

To obtain consistent performance over the life of your vacuum, read through these instructions and keep them handy for future reference. If you require service, contact the dealer from whom the vacuum was purchased, or the local authorized Service Station. Always refer to your Service Station for complete service information. For prompt and complete service information, always refer to the model, type and serial number indicated on the rating plate.

IMPORTANT

If the supply cord of this appliance is damaged, it must be replaced by a repair shop appointed by the manufacturer as special purpose tools are required.

FIGURE B



General Information

BEFORE CONNECTING THE MACHINE TO A POWER SUPPLY, check the electrical rating plate located on the back of the motor head to see if the rated voltage agrees within 10% of the voltage available.

DO NOT OIL the motor in this vacuum cleaner. It is permanently lubricated and sealed.

DO NOT OPERATE the vacuum cleaner without any filters. The Dry Filter, Wet/Dry Cartridge Filter or HEPA filter should be installed to prevent dirt and dust from entering the motors.

This machine is equipped with a thermal breaker to protect the motor and other vital machine parts from overheating. Should this breaker open, you will have to wait at least 5-10 minutes before starting the machine again. You must reset the machine by switching the ON/OFF button. While you are waiting, switch the machine off and unplug it. Check the hose and filters to be sure that nothing is blocking the flow of air through the machine.

Service Information

UNPLUG THE MACHINE BEFORE PERFORMING ANY MAINTENANCE. 800-214-9111

To obtain consistent performance over the life of your vacuum, read through these instructions and keep them handy for future reference. If you require service, contact the dealer from whom the vacuum was purchased, or the local authorized Service Station. Always refer to your Service Station for complete service information. For prompt and complete service information, always refer to the model, type and serial number indicated on the rating plate on the back of the motor head.

IMPORTANT

The machine is equipped with a specially designed cord which if damaged, must be replaced by a cord of the same type. This cord is available at authorized service centers and dealers and must be installed by trained personnel.

Machine Setup

The GWD255 Drum Top Vacuum can be equipped for either dry or wet/dry collection. Follow the instructions below before attempting to use your new machine to insure that you have assembled the unit correctly. **NOTE:** For wet/dry collection, you must purchase the optional float chamber & wet/dry cartridge filter assembly (5) shown below.

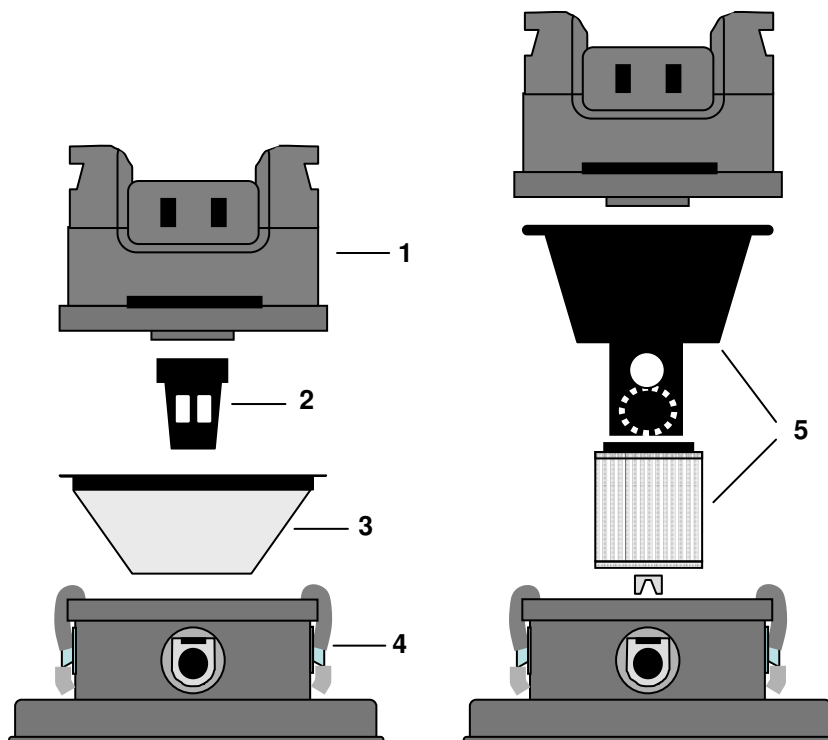
Dry Collection - Install the dry filter support (2) on the underside of the motor head (1). See next page for installation instructions. Center the drum ring (4) onto a 30 or 55 gallon drum. Place the dry filter (3) on top of the drum ring. Carefully place the motor head/filter support onto the drum ring and clamp the entire assembly together using the latches.

The dry filter should be used when collecting dry powders or fine dust. This washable filter is easy to clean and will dry much faster than the wet/dry cartridge filter. Small amounts of water can be collected using the dry filter; however, it is best to allow the filter to dry completely before resuming the collection of dry powder. An optional HEPA filter can be added in place of the filter support (see HEPA filter installation).

Wet/Dry Collection - [Note: If the machine is configured for dry collection, remove the dry filter support (2) and dry filter (3) before attempting to install the float chamber and wet/dry cartridge filter assembly (5)]. Center the drum ring (4) onto a 30 or 55 gallon drum. Place the float chamber and wet/dry cartridge filter assembly into the drum ring. Carefully place the motor head onto the drum ring and clamp the entire assembly together using the latches.

The wet/dry cartridge filter is best used for collecting large amounts of water. The float ball inside the float chamber will restrict the flow of air in the vacuum hose when the drum is approximately 75% full. This will stop the drum from overfilling and will prevent water from entering the motor head. The vacuum's motors are cooled by circulating outside air through the motor head and will continue to run even after the flow of air in the hose has stopped. The wet/dry cartridge filter can also serve as a dry filter; however, it is best to allow the filter to dry completely before switching to dry collection. An optional HEPA filter can be added (see HEPA Filter installation).

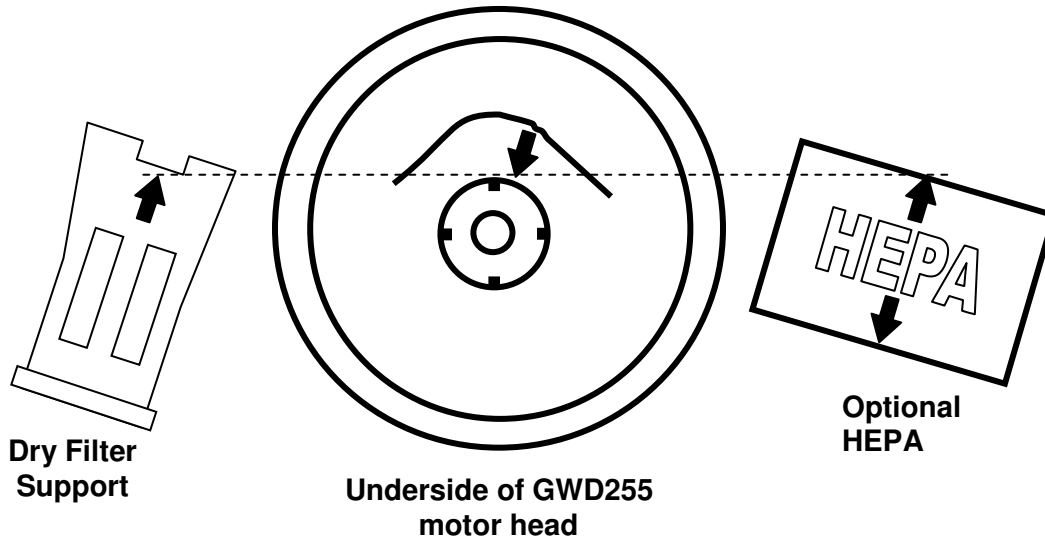
**Dry
Collection**



**Wet/Dry
Collection**

Dry Filter Support / Optional HEPA Filter

The dry filter support is used to prevent the dry filter from collapsing under vacuum pressure. The dry filter support and the optional HEPA filter are mounted in the same location under the motor head. If the optional HEPA filter is used, the dry filter support must be removed. Once installed, the HEPA filter will serve as the support for the dry filter. If the HEPA filter is removed from the machine, be sure to reinstall the dry filter support before continuing to use the dry filter.



Installation / Removal of Dry Filter Support

1. To install the dry filter support, align the arrow on the support with the arrow on the underside of the motor head. Twist the support clockwise until you feel it lock into place.
2. To remove the dry filter support, twist the support counterclockwise until it unlocks from the motor head. Remove the support and inspect the condition of the foam motor gasket underneath. If gasket is dirty or damaged, replace it.

Installation / Removal of Optional HEPA Filter

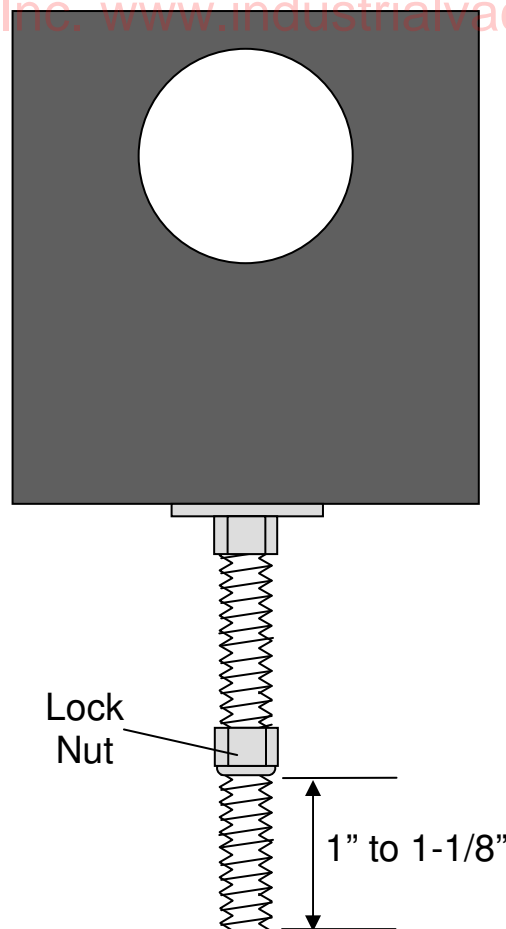
EMPTYING: If this vacuum cleaner is used to collect hazardous material, do not attempt to open or empty its contents without personal protective clothing and respiratory protection. This procedure must be completed in a contained environment. Contact with the cleaner, filters and all other accessories used when picking-up hazardous materials must be handled according to federal (EPA, OSHA), state and local regulations valid for the vacuumed substance.

1. Before installing the optional HEPA filter, make sure the dry filter support has been removed from the underside of the motor head. Align the arrow on the HEPA filter with the arrow on the motor head and twist the HEPA filter clockwise until you feel it lock into place.
2. To remove the HEPA filter, twist the filter counterclockwise until it unlocks from the motor head. Remove the HEPA filter and inspect the condition of the foam motor gasket underneath. If gasket is dirty or damaged, replace it.

Installation / Removal of Optional Wet/Dry Cartridge Filter

EMPTYING: If this vacuum cleaner is used to collect hazardous material, do not attempt to open or empty its contents without personal protective clothing and respiratory protection. This procedure must be completed in a contained environment. Contact with the cleaner, filters and all other accessories used when picking-up hazardous materials must be handled according to federal (EPA, OSHA), state and local regulations valid for the vacuumed substance.

1. To remove the wet/dry cartridge filter, place the float chamber and filter assembly upside-down on a flat working surface and remove the wing nut and washer that secures the filter to the float chamber assembly. Hold the filter by the end cap and gently twist the filter back and forth to separate the gasket from the float chamber. Lift the filter off of the threaded stud and inspect the float ball cavity underneath to insure that the float ball moves freely. Make sure the filter sealing surface is clean before installing a new filter.
2. To install the wet/dry cartridge filter, carefully place the filter down over the threaded stud and center the filter on the float chamber assembly. Reinstall the washer and wing nut. Tighten the wing nut by hand until the filter bottoms out on the lock nut underneath. The position of the lock nut is set at the factory and is designed to provide the proper amount of gasket compression for the filter. Use the figure below to check the position of the lock nut and to readjust the nut if necessary.



Cleaning the Dry Filter and Wet/Dry Cartridge Filter

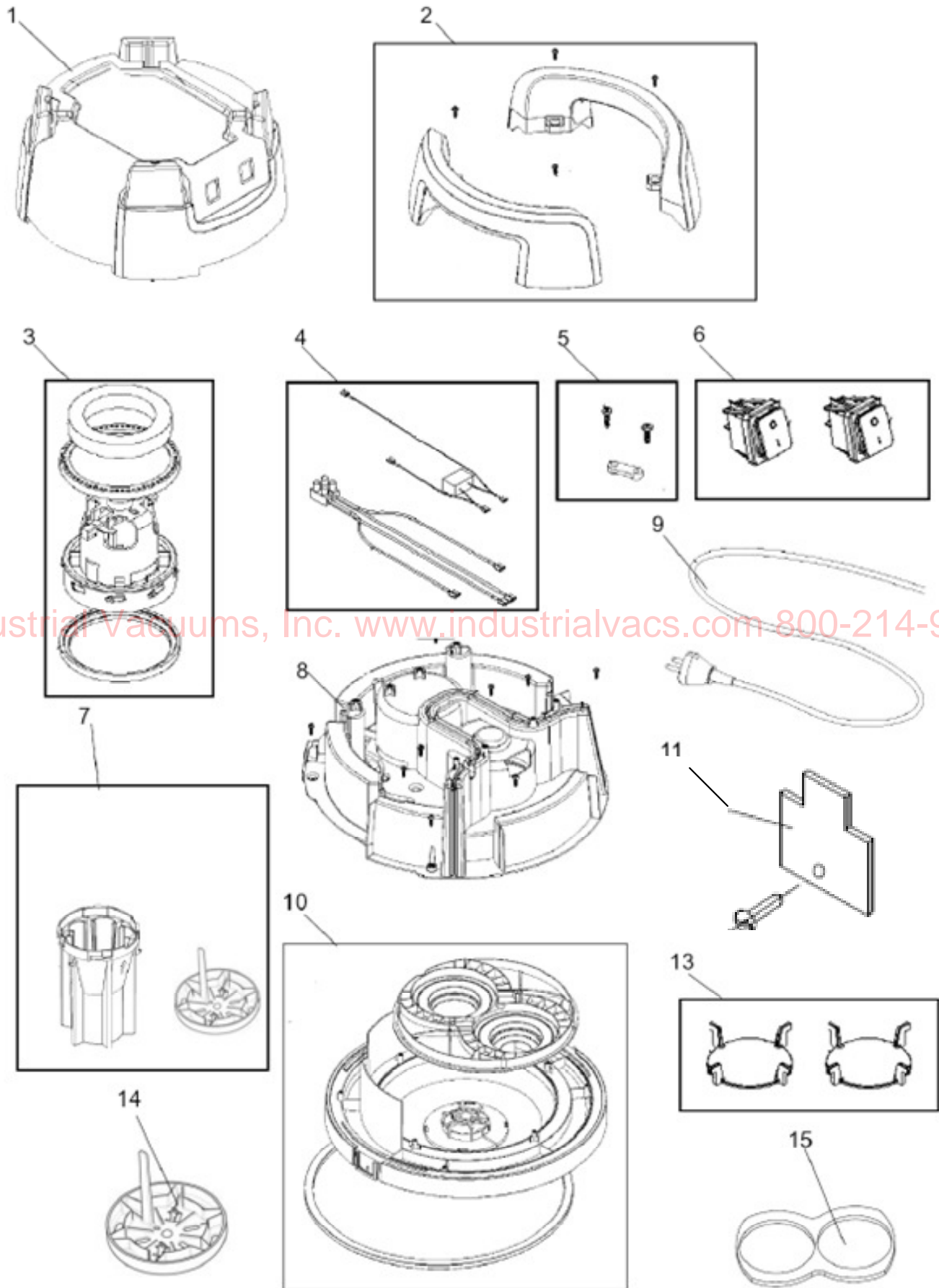
The dry filter is washable. To clean the filter, remove it from the machine and shake off all excess debris. Wash the filter gently in water. A mild detergent can be used. Allow the filter to dry thoroughly before reusing. To reduce drying time, replace the filter inside the machine and turn the vacuum on. The incoming air created by the vacuum will help to dry the filter. Do not collect any material while the filter is drying.

The wet/dry cartridge filter is also washable. To clean the filter, remove it from the float chamber assembly and tap against the end caps to remove any loose debris. Hold the filter underneath a faucet at an angle so that the stream of water falls directly against the wire screen surface on the inside of the filter. The force of the water should dislodge the dirt from between the folds of filter. Rotate the filter underneath the stream of water and continue rinsing until the filter is clean. Be careful not to puncture or damage the filter material. Do not use compressed air to remove dirt or to dry the filter as this could damage the filter material. Allow the filter to dry thoroughly before collecting any dry material. To reduce drying time, replace the filter inside the machine and turn the vacuum on. The incoming air created by the vacuum will help to dry the filter.

The HEPA filter is **not** washable and no maintenance should be performed on the HEPA filter. Once the HEPA filter becomes clogged it should be disposed of in accordance with federal (EPA, OSHA), state and local regulations.

Industrial Vacuums, Inc. www.industrialvac.com 800-214-9111

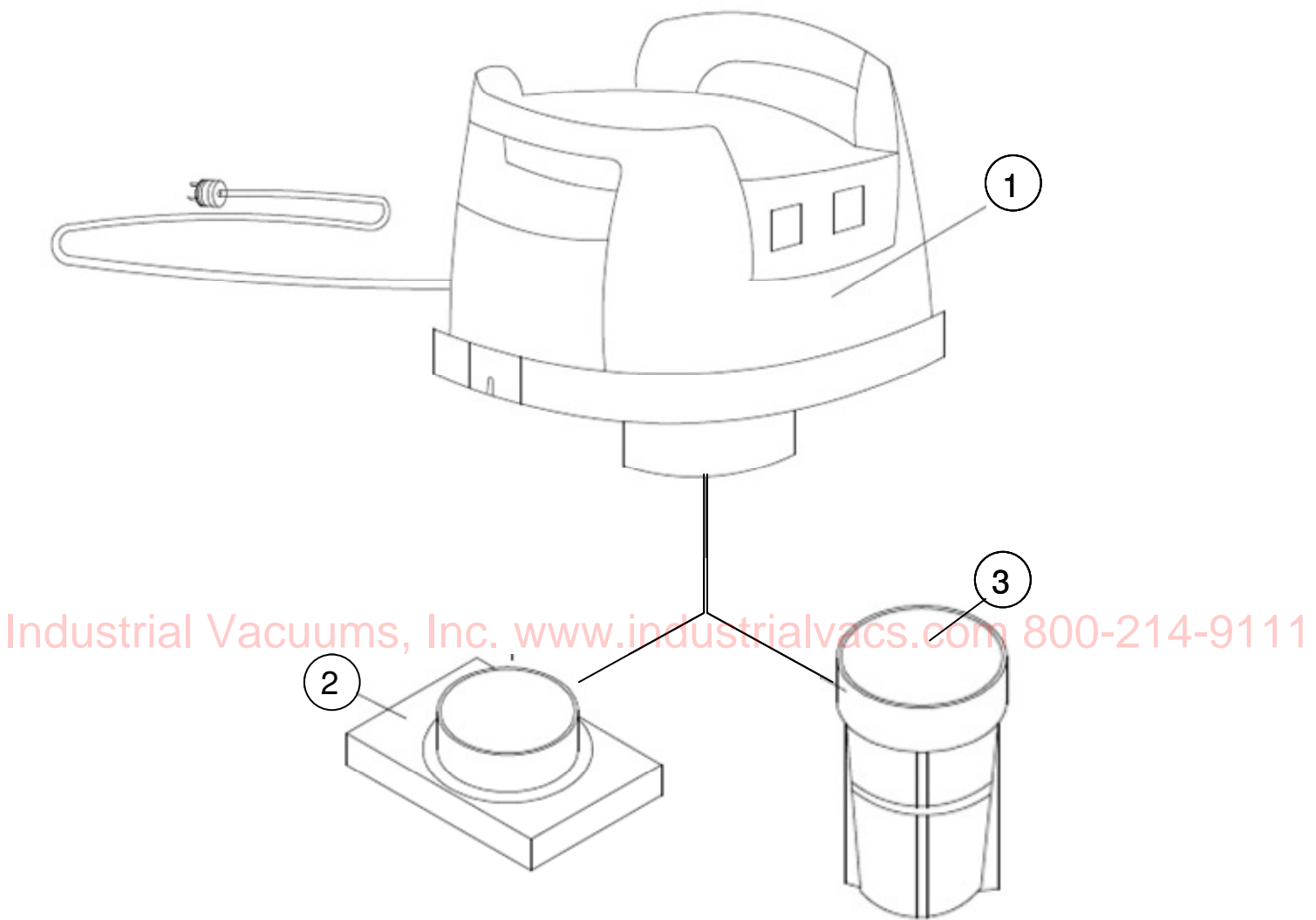
Parts Explosion - Motor head Assembly



Parts List for Motor head Assembly

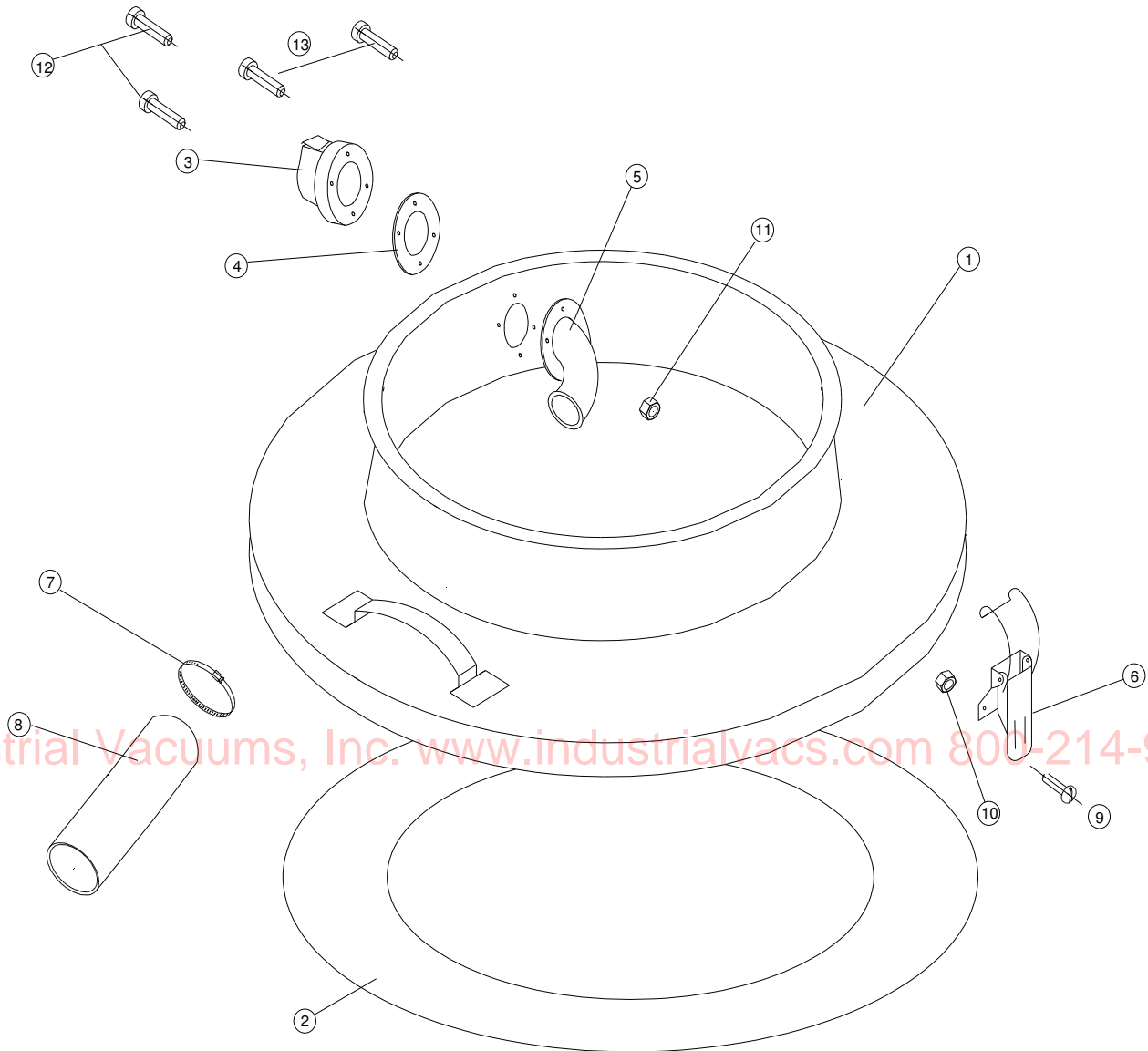
Item.No.	Part No	Qty.	Description	Note
1	140 9531 500	1	Cover outer GWD 350/375 2 fan units	
2	140 9527 500	2	Handle GWD 350/375	Screws incl.
3	140 8689 500	2	Fan unit 220-240V BP	Gaskets incl.
3	140 8689 510	2	Fan unit 100-127V BP	Gaskets incl.
4	140 7620 530	1	Suppressor EU/UK/AU/NZ	
5	140 6560 500	1	Anti strain clip	Screws incl.
6	140 9537 500	2	Switch two pole	
7	140 8680 500	1	Filter support (for dry filter only)	
8	140 9523 500	1	Cover fan unit GWD 350/375 2-motor version	
9	12222501	1	Cord set EU 10M	
9	12222503	1	Cord set UK 10 M	
9	12222506	1	Cord set AU/NZ	
9	12003805	1	Cord set JP/US	
10	140 9508 510	1	Chassis GWD 350-2/375-2 Two motor version	
11	M90023	2	Latch Keeper (uses #6 x 1/4" screw)	
13	140 9526 500	2	Valve disc GWD 350/375	
14	147 1119 500	1	Adapter for float basket	Wear protection
15	>>140 9529 500	1	Sound absorber	

Complete Motor head Assembly
(Optional HEPA filter mounting shown)



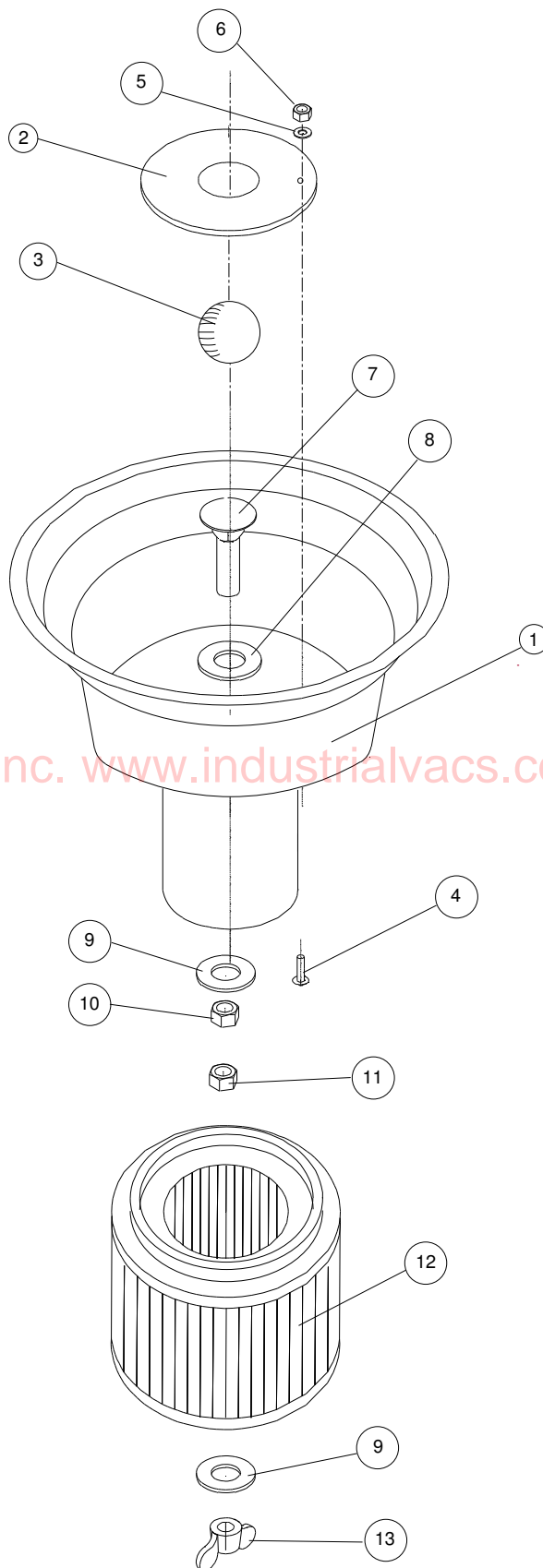
Item#	Description	Part Number	Quantity
1	GWD 255 motorhead, complete	M90036	1
2	HEPA Filter, Optional	1408678500	1
3	Filter Support (use with dry filter only)	1408680500	1

Drum Ring Assembly



Item #	Description	Part Number	Quantity
1	Drum Ring	M90017	1
2	Drum Ring Gasket	01786501	1
3	Inlet, 50mm	8-32177	1
4	Gasket, Inlet	8-17005	1
5	Deflector, Inlet	8-32314	1
6	Latch	1408199000	2
7	Hose Clamp	01703601	1
8	Tube, Inlet	01786101	1
9	Screw, 8-32 x 3/8"	01789018	4
10	Nut, 8-32 nylon lock	01763000	4
11	Nut, Acorn M5	01763028	4
12	Screw, M5 x 25mm	01763029	2
13	Screw, M5 x 30mm	01763061	2
1-13	Drum Ring Complete	M90028	1

Float Chamber Assembly *(continued on next page)*



Industrial Vacuums, Inc. www.industrialvac.com 800-214-9111

Float Chamber Assembly *(continued)*

Item #	Description	Part Number	Quantity
1	Float Chamber Housing	n/a	n/a
2	Plate, Float Ball	01783500	1
3	Float Ball	01783900	1
4	Screw, 8-32 x 5/8"	01788214	6
5	Washer	01789007	6
6	Nut, 8-32 nylon lock	01763000	6
7	Bolt, Carraige 5/16 x 2-1/2"	01763910	1
8	Washer	01767202	1
9	Washer	01763126	2
10	Nut, 5/16	01763075	1
11	Nut, 5/16 nylon lock	01784859	1
12	Cartridge Filter, Wet/Dry	M90019	1
13	Wing Nut 5/16	01729110	1
1-11	Float Chamber	M90028	1
1-13	Float Chamber Complete with Filter	M90034	1

Industrial Vacuums, Inc. www.industrialvac.com 800-214-9111

Warranty

The Nilfisk companies warrant that Nilfisk equipment will be free of defects in workmanship or material for a period of two years from the date of delivery. Should any failure to conform to this warranty appear, the Nilfisk companies shall upon notification within such time period, correct such non-conformity, at its option, either by repairing any defective part or parts, or by replacing a part or parts provided that the equipment is returned to an authorized Nilfisk service facility. In all cases freight both ways will be at the expense of the customer. Equipment shall not be returned without advance notice to, and consent of the Nilfisk companies.

EXCEPT AS SPECIFICALLY SET FORTH HEREIN, THE NILFISK COMPANIES MAKE NO WARRANTIES, EITHER EXPRESSED OR IMPLIED AS TO ANY MATTER WHATSOEVER, INCLUDING WITHOUT LIMITATION ANY AND ALL WARRANTIES OF MERCHANTABILITY, FITNESS FOR PURPOSE, OR OTHER WARRANTIES, ALL OF WHICH ARE EXPRESSLY DISCLAIMED AND EXCLUDED. NEITHER PARTY SHALL BE LIABLE TO THE OTHER FOR SPECIAL, INDIRECT, INCIDENTAL OR CONSEQUENTIAL DAMAGES, INCLUDING BUT NOT LIMITED TO LOSS OF PRODUCTION, LOSS OF TIME, LOSS OF PROFITS OR OTHER SIMILAR INDIRECT LOSSES WHICH MIGHT OCCUR AS A RESULT OF DEFECTS, PARTIAL OR TOTAL FAILURE OF THE PRODUCT TO PERFORM AS SPECIFIED.

Correction of non-conformities or defects in the manner and for the period of time provided above, shall constitute fulfillment of all liabilities of the Nilfisk companies to the customer, whether based on contract, negligence or otherwise with respect to, or arising out of such equipment. The remedies set forth herein are exclusive, and the liability of the Nilfisk companies with respect to this sale or anything done in connection therewith, whether in contract, in tort, under any warranty, or otherwise, shall not except as expressly provided herein, exceed the price of the equipment or part on which such liability is based.

The warranty does not cover repairs due to normal wear and tear, accident, neglect, misuse or abuse, incorrect installation or use other than as described in the instruction booklet. Breaks in hoses and cables are not covered. This warranty is rendered void if the motor number plate is removed or defaced or if repairs are made or attempted by persons not authorized by the Nilfisk companies.

Nilfisk-Advance America Inc.
300 Technology Drive
Malvern, PA 19355
Tel: 1.610.647.6420
Fax: 1.610.647.6427
www.pa.nilfisk-advance.com
e-mail: email@nilfisk-advance.com